



**TEST REPORT N. 2011-00838**

**PAG.1/8**

TEST TYPE: 1. LIFTING TEST  
MATERIAL /SAMPLE: N. 1 GRIPS DEVICE  
JOB N°: MBO11E01785  
D.D.T.: N°00148 del 05/09/2011  
ORDER: N°ddt n. 00148 DEL 2011/09/05  
SAMPLE RECEIPT DATE: 2011-09-13  
CLIENT **AUTOATTREZZATURE STANZANI S.n.c.**  
Via Savena Vecchia, 67  
BARICELLA - BO

**DECLARATIONS**

The Client engages itself to reproduce this test report integrally; any partial reproduction shall be authorized by CERMET.

Cadriano di Granarolo, 2011-10-13

The Engineer  
Dott. Michele Torri

The Manager of laboratory  
Roberto Bertozzi

INNOVATIVE  
**CRTE**

Official U.S. importer partner:  
Innovative Solutions CRTE, Corp  
101 Alexander Ave, Suite 2  
Pompton Plains, NJ 07444

SALES  
SERVICE  
SUPPORT

**(973) 768-9812**  
WWW.INNOVATIVECRTE.COM



**TEST REPORT N. 201100838**

CERMET Soc. Cons. a r.l.

Headquarter Bologna : Via Cadriano, 23 - 40057 Cadriano - Granarolo Emilia (Bo)

Tel. +39 051.764.811 - Fax +39 051.763.382 - infobologna@cermet.it - www.cermet.it

**SAMPLE IDENTIFICATION**

P.I. 00627711203 - C.F. 03502820370 - Iscrizione Trib. BO n. 41500 del Registro Società - Capitale Sociale € 421.245,00

The Client delivered n° 1 sample identified as follows:

Page 2/8

CERMET Identification	Description	CLIENT Identification	Materials
133 (right angle)	Grips device	133 (right angle)	/

The Photo 1 shows the test sample to the state of presentation; in the next Photo 2 shows another configuration of the test sample.



Official U.S. importer partner:  
**Innovative Solutions CRTE, Corp**  
101 Alexander Ave, Suite 2  
Pompton Plains, NJ 07444

SALES  
SERVICE  
SUPPORT

**(973) 768-9812**  
[WWW.INNOVATIVECRTE.COM](http://WWW.INNOVATIVECRTE.COM)



photo 3: sample "133 modified"

Test purpose is to determine the mechanical strength of the samples simulating the lifting in both configurations presented.



**TEST 1: LIFT TESTING**

**DATE OF ACTIVITY :2011-10-12**

**EQUIPMENT**

Universal static testing machine INSTRON 6027 with INSTRON load cell, maximum capacity 200 kN, code IM006 (SIT calibration certificate No. 1100025FSE).

**TEST CONDITIONS**

The sample was fixed on the INSTRON static testing machine using the two different configurations shown in Photo 3 and 4.

**TEST METHODS AND REFERENCE SPECIFICATIONS**

UNI EN 10002/1:2004

ASTM E08

PTL006 rev. 0

**TEST PARAMETERS**

Temperature: ambient

Preload: 10 N

Test Speed: 10 mm/min



photo 3: sample "133 right angle" – test layout



Official U.S. importer partner:  
Innovative Solutions CRTE, Corp  
101 Alexander Ave, Suite 2  
Pompton Plains, NJ 07444

SALES  
SERVICE  
SUPPORT

(973) 768-9812  
WWW.INNOVATIVECRTE.COM



photo 4: sample "133 modified" – test layout

INNOVATIVE  
**CRTE**

Official U.S. importer partner:  
**Innovative Solutions CRTE, Corp**  
101 Alexander Ave, Suite 2  
Pompton Plains, NJ 07444

SALES  
SERVICE  
SUPPORT

**(973) 768-9812**  
[WWW.INNOVATIVECRTE.COM](http://WWW.INNOVATIVECRTE.COM)



### TEST RESULTS

The following are the results: The table below shows the values of the force  $F$  measured at maximum load reached and the behavior of the device at the end of test

Device	Fm kN	Fm kg	Stato
<b>133 (right angle)</b>	<b>44,1</b>	<b>433,0</b>	breakage of one of the two brackets of the jaw (photo 5)
U(k=2)	0,9	8,7	
<b>133 (modified)</b>	<b>96,2</b>	<b>943,6</b>	permanent deformation of the clamping screw which holds the two jaws (photo 6)
U(k=2)	1,7	18,9	

Fm is the tensile strength

*The estimation of measurement uncertainty expanded above standard is based on the uncertainty multiplied by a coverage factor  $k = 2$  (level of confidence 95%).*

The photo below shows the status of the sample at the end of the tests..

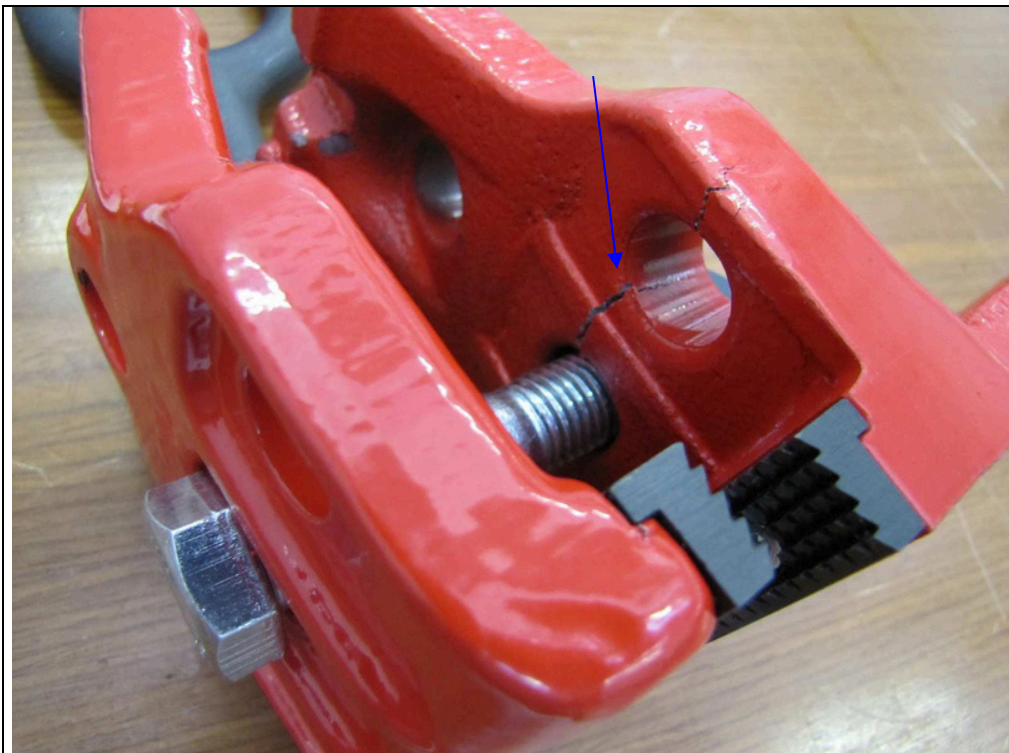


photo 5: sample "133 right angle" – state of the device at the end of test



photo 15: sample "133 modified" – state of the device at the end of test

INNOVATIVE  
**CRTE**

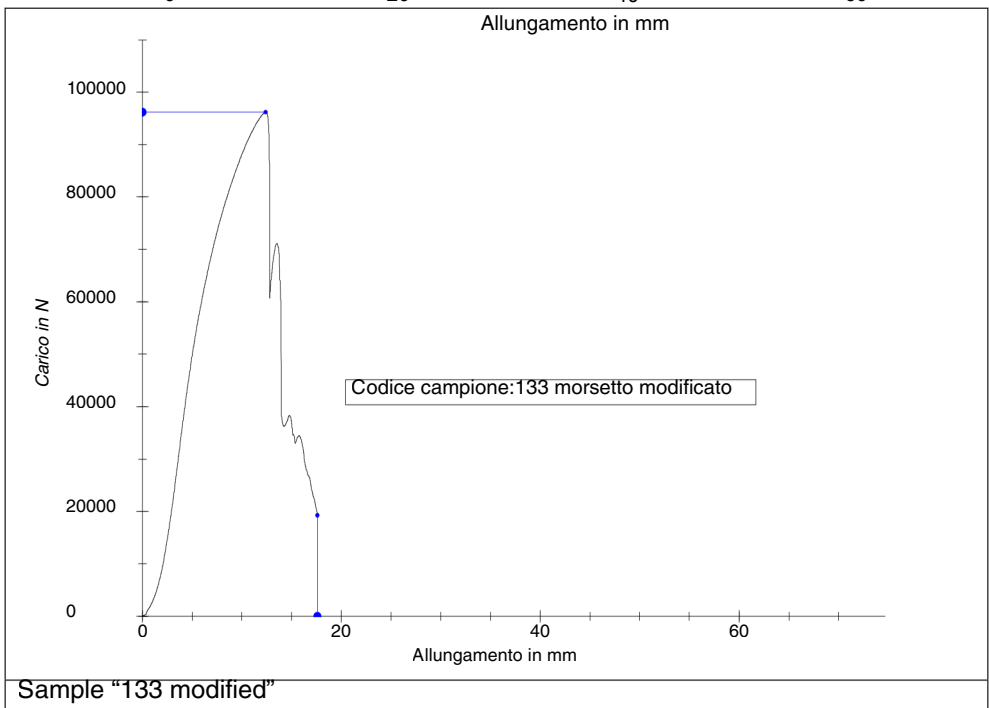
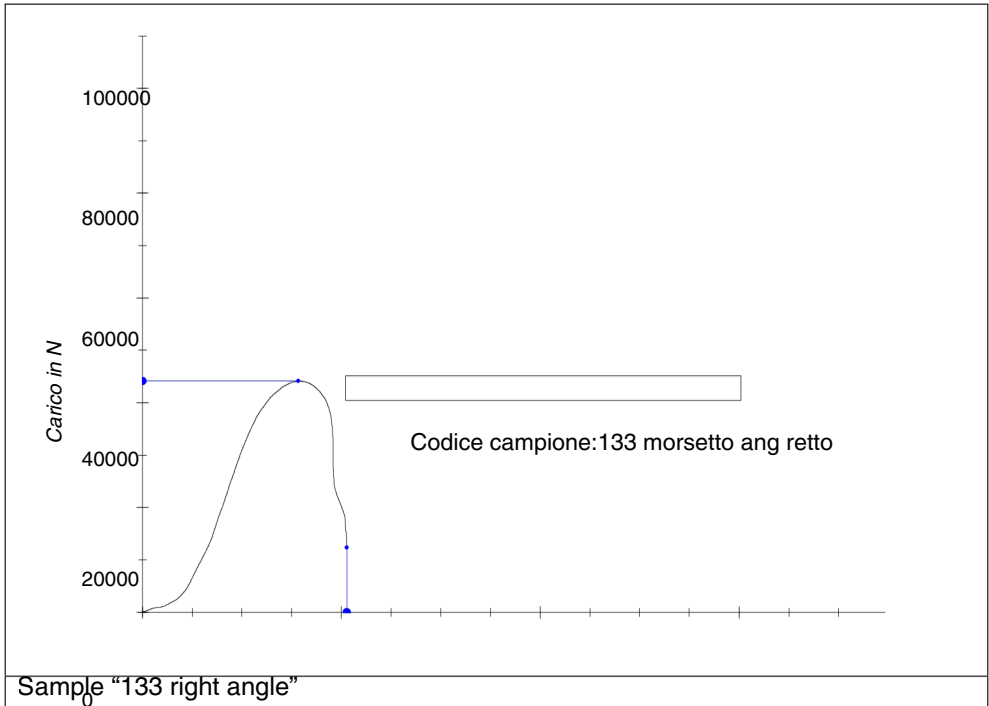
Official U.S. importer partner:  
Innovative Solutions CRTE, Corp  
101 Alexander Ave, Suite 2  
Pompton Plains, NJ 07444

SALES  
SERVICE  
SUPPORT

**(973) 768-9812**  
[WWW.INNOVATIVECRTE.COM](http://WWW.INNOVATIVECRTE.COM)



GRAPHIC



NOTES

Samples are maintained for 6 months after the delivery of the test documents. The samples in excess are stored in industrial atmosphere; this might involve a deterioration that would jeopardize the relevant use or test repetition. CERMET does not assure that after the above said term the samples are still traceable.



Official U.S. importer partner:  
Innovative Solutions CRTE, Corp  
101 Alexander Ave, Suite 2  
Pompton Plains, NJ 07444

SALES  
SERVICE  
SUPPORT

(973) 768-9812  
WWW.INNOVATIVECRTE.COM